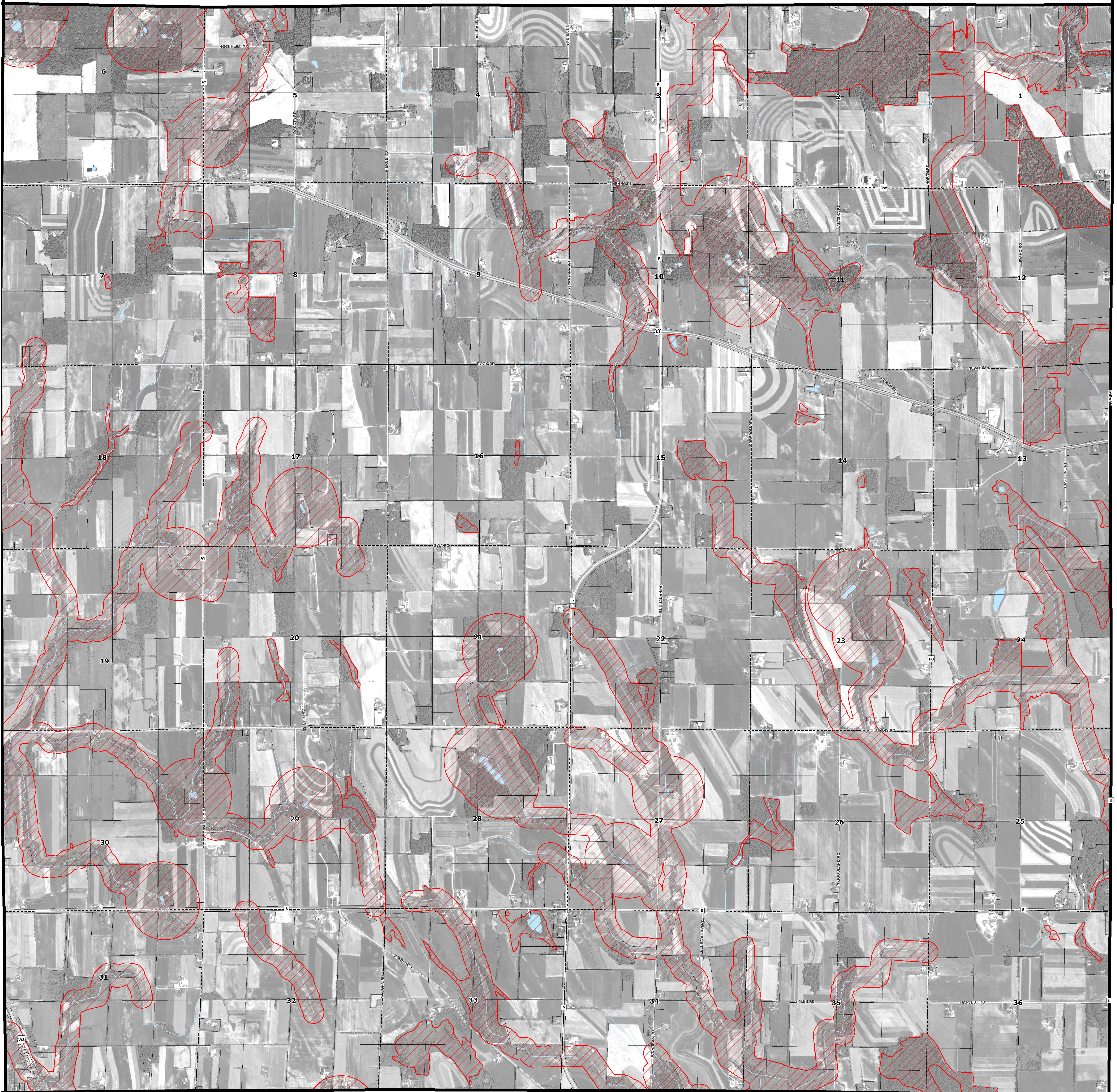


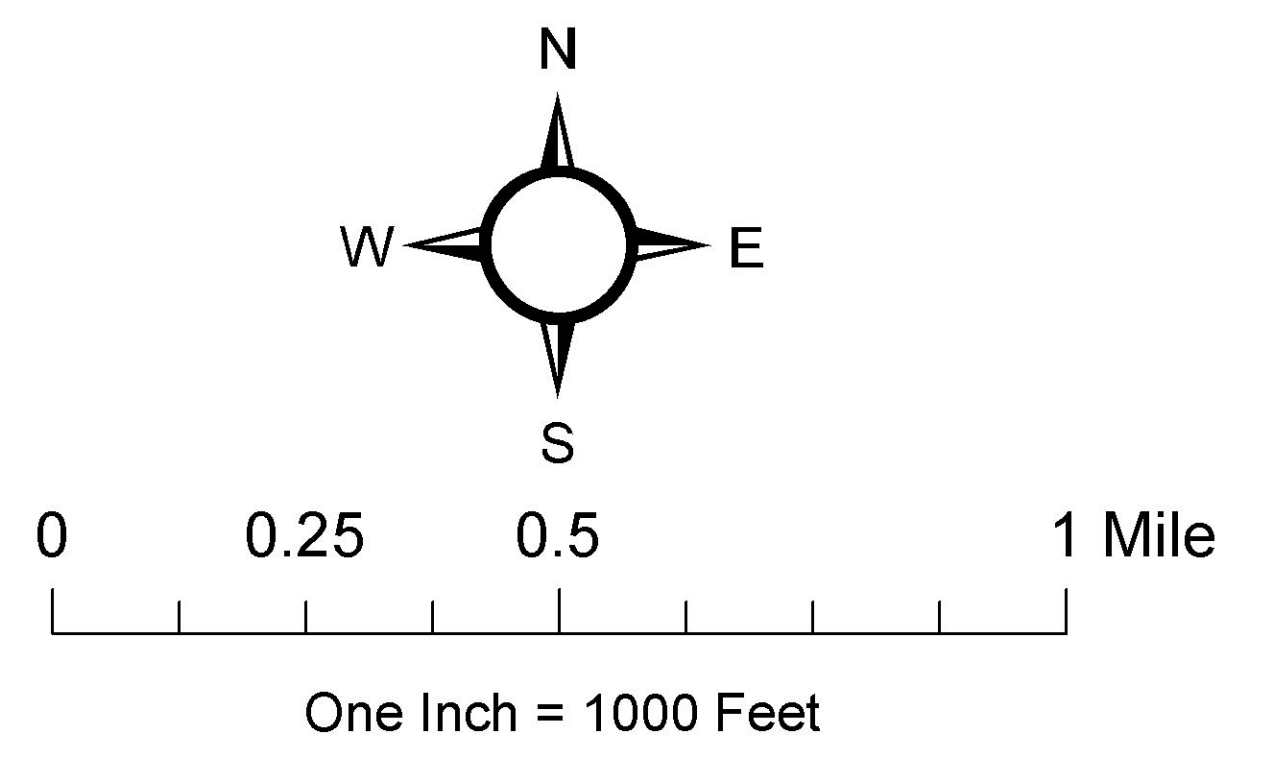
TOWN OF HERMAN COUNTY SHORELAND PROTECTION ORDINANCE JURISDICTION



Legend

- Shoreland Protection Ordinance Area
- Tax Parcels
- Lakes & Rivers
- PLSS Sections
- Municipalities

***** NOTE *****
All land use activities such as new structures, structural improvements, and/or earth moving which take place within the cross-hatched areas will require review by the Dodge County Land Resources & Parks Department.



Data Sources
 1999, 2006, 2010 Aerial Photos (Dodge Co. and NAIP)
 2010 FEMA Floodplain
 2006 DNR Wetland Inventory